

TG SOFTWARE SERIES GRAPHIC MANAGEMENT SOFTWARE

The TG Morley-IAS graphic program allows fast and easy administration of any incident that arises in one or more centres directly from a PC. It is possible to include sounds, voice or video for any type of incident arising in the system.

Using the TG administration program, it is possible to read off the state of each item of equipment and to determine its state, describe the type of signal, deletion etc.

The history system enables events to be listed or printed out on the basis of the type of equipment, the event, the date, the user etc.

Connection with the systems can be made directly to the serial port of the administration computer (15 metres according to the RS232C standard) or by means of the protocol. Through its own Intranet system to any geographical point.

An SMS message transmitter (reference TGGSM) may be connected to send selected events to the mobile GSM telephones indicated. The event, the equipment, the incident, the address and the time can be displayed.

The program comprises 128 access levels with user-configuration permits.

The simulation option allows incidents to be generated and the indications to be visualized.

The maintenance option generates a list showing the state of the equipment and enables selected items of equipment to be monitored.

It is possible for links to be created between planes, so that planes can be changed automatically according to the state and the path to any alarmed or damaged equipment can be indicated.

The Morley-IAS system can also comprise BIEs, evacuation routes etc. in the extinguisher levels. This should also show the state, maintenance recommendations and instructions.

The different items of the installation can be arranged on BMP levels in different formats (640 x 480; 800 x 600 or .



Graphic Administration Software.
Series TG

1024 x 768 pixels depending on the configuration of the screen. The sensors and the input and output modules can be represented by using a complete library of icons included with the application or by means of geometric forms, so that a part of the plane can be highlighted if there is a change of state in an item of equipment. The installation planes can be linked to changes of plane and counters of equipment that has been alarmed, damaged, deleted etc. Optionally, an indication for the physical direction of each item of equipment can be included.

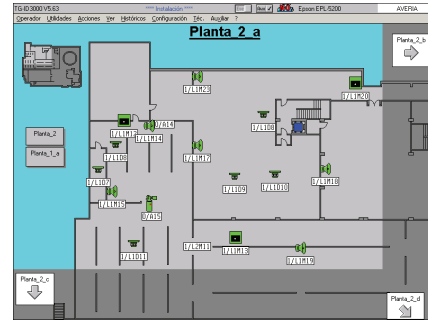
In the event of an alarm or any other event, a graphic representation of the condition of the sensor is shown in realtime. In this way, we can rapidly assess the development of the alarm and react accordingly, even before the system can initiate the evacuation process.

The program has the option of a rapid display of the state of the loop equipment. This screen will indicate the current condition of the 99 sensors and the 99 input and output modules. By pressing the selected equipment, it is possible to access its location in the plane or even to modify its configuration.

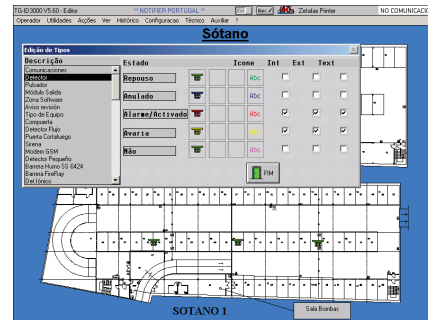
TG SOFTWARE SERIES GRAPHIC MANAGEMENT SOFTWARE

The TG software incorporates options covering the maintenance, inspection and monitoring of equipment by direct on the spot readings, a graph of values or the storing of equipment values.

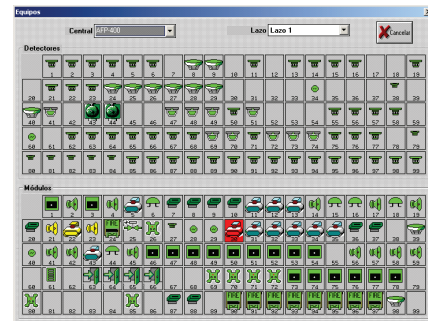
The history, with 'unlimited' capacity depending on the hard disk of the computer, shows the nature of the incident and the name of the active user at all times. The user can attach information relating to the activities that have been carried out and consult this later in the history. The events history can include filters in respect of the date, the time the equipment, zones, the nature of the event etc. Events involving an alarm can be highlighted by the use of a selected color (red in default). Similarly, each event can be linked to a given color to facilitate its subsequent display.



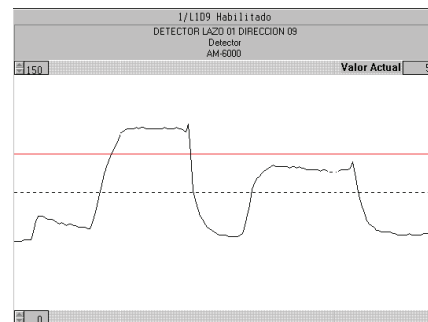
Screen plan with alarm equipment



Screen with equipment options



Screen with equipment options



Screen with equipment graph

Indice	Estado	Tipos	Descrição	Tipos de Evento	Hora	Data
Normal	1/F.Com	Comunicação	ID 3000	Alertação/Reiniciada	20:35:33	29/03/2003
Normal	1/F.CEN	1/F.CEN	1/F.CEN	Alertação/Reiniciada	20:35:34	29/03/2003
Normal	1/F.CEN	Tecnico	1/F.CEN	Alertação/Reiniciada	20:35:34	29/03/2003
Normal	1/F.CEN	Tecnico	1/F.CEN	Alertação/Reiniciada	20:35:34	29/03/2003
Normal	1/F.CEN	Tecnico	1/F.CEN	Alertação/Reiniciada	20:35:34	29/03/2003
Normal	1/F.CEN	Tecnico	1/F.CEN	Alertação/Reiniciada	20:35:34	29/03/2003
Normal	1/F.CEN	Tecnico	1/F.CEN	Alertação/Reiniciada	20:35:34	29/03/2003
Normal	1/F.CEN	Tecnico	1/F.CEN	Alertação/Reiniciada	20:35:34	29/03/2003
Habilitado	1/L109	SENORES FUMOS ADVERTIDOR	SENORES FUMOS ADVERTIDOR	Alertação/Reiniciada	20:35:50	29/03/2003
Habilitado	1/F.CEN	Tecnico	1/F.CEN	Alertação/Reiniciada	20:35:50	29/03/2003
Habilitado	1/L109	SENORES FUMOS ADVERTIDOR	SENORES FUMOS ADVERTIDOR	Alertação/Reiniciada	20:36:40	29/03/2003
Habilitado	1/F.CEN	Tecnico	1/F.CEN	Alertação/Reiniciada	20:36:43	29/03/2003
Habilitado	1/F.CEN	Tecnico	1/F.CEN	Alertação/Reiniciada	20:36:54	29/03/2003
Habilitado	1/F.CEN	Tecnico	1/F.CEN	Alertação/Reiniciada	11:04:05	01/04/2003
Habilitado	1/F.CEN	Tecnico	1/F.CEN	Alertação/Reiniciada	14:07:21	03/04/2003
Habilitado	1/F.CEN	Tecnico	1/F.CEN	Alertação/Reiniciada	15:54:25	10/04/2003
Habilitado	1/F.CEN	Tecnico	1/F.CEN	Alertação/Reiniciada	15:56:50	11/04/2003
Habilitado	1/F.CEN	Tecnico	1/F.CEN	Alertação/Reiniciada	16:57:11	10/04/2003
Habilitado	1/F.CEN	Tecnico	1/F.CEN	Alertação/Reiniciada	18:52:03	11/04/2003
Habilitado	1/F.CEN	Tecnico	1/F.CEN	Alertação/Reiniciada	19:08:13	11/04/2003
Habilitado	1/F.CEN	Tecnico	1/F.CEN	Alertação/Reiniciada	19:50:43	11/04/2003

History display screen

CHARACTERISTICS

- Graphic administration software for Morley-IAS systems (Compatible with DXc System networks)
- Identification of each point on planes with icons, instructions and sounds that are configurable by state
- Visualisation of equipment values and an optional listing of equipment, monitoring of equipment, a graph of values and a window of loop equipment
- Administration and control of the system with options for deletion, mute, resetting and evacuation
- Changing the configurable interactive plane in line with the state of the equipment
- Different levels of access fully configurable by the user
- Historical administration with selectable display and printout for each type of register (date, user, system, event etc.)
- Option of calling SMS (TG-GSM) with a selection of messages based on the state or the type of the equipment
- RS-232 connection of up to 15 m either via IP or via intranet
- Maintenance administration for extinguishers, BIE, etc.

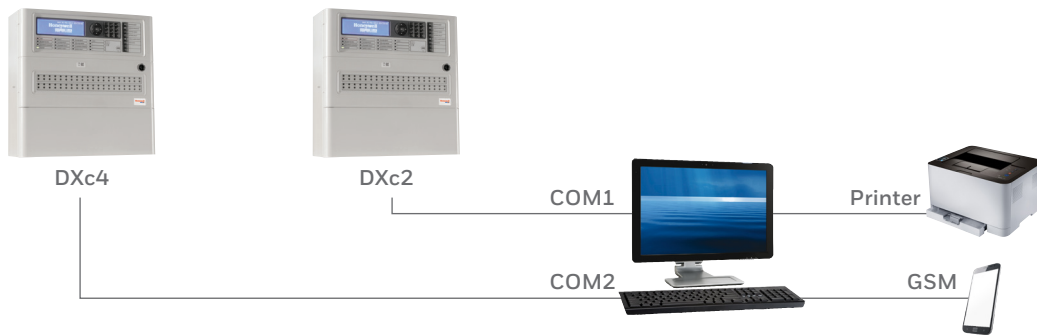
TG SOFTWARE SERIES GRAPHIC MANAGEMENT SOFTWARE

APPLICATIONS

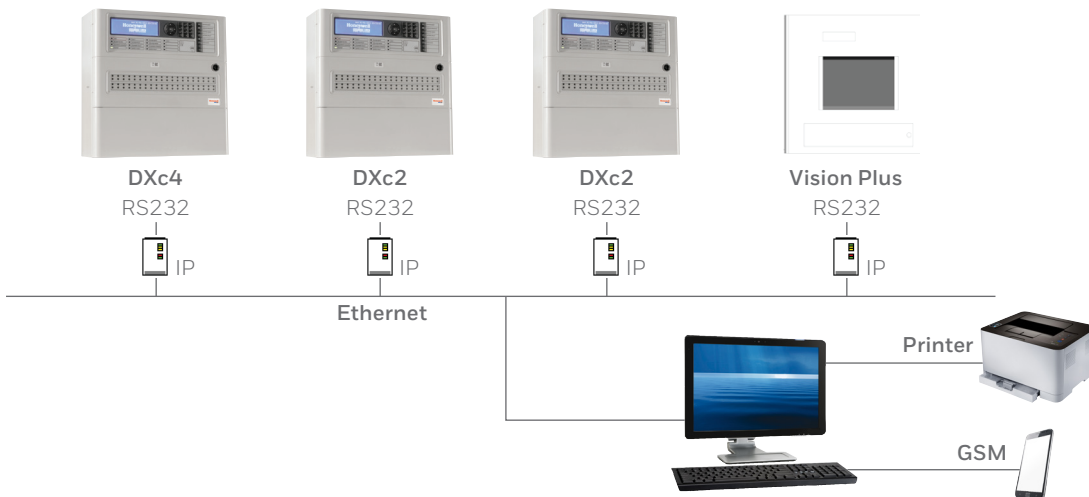
Configurations

There are different topologies for the connection between systems and the management program:

1. Direct connection between the serial port RS232 of the system (DB9) and the serial port RS232 of the management computer. This connection enables the connection of as many systems to as many serial ports that the computer possesses. The number of RS232 serial ports can be increased by using RS232 to USB converters. If the distance between the system and the computer is greater than that indicated in the EIA-232C standard (15 metres), RS232 amplifiers can be used, reaching distances of several kilometers.

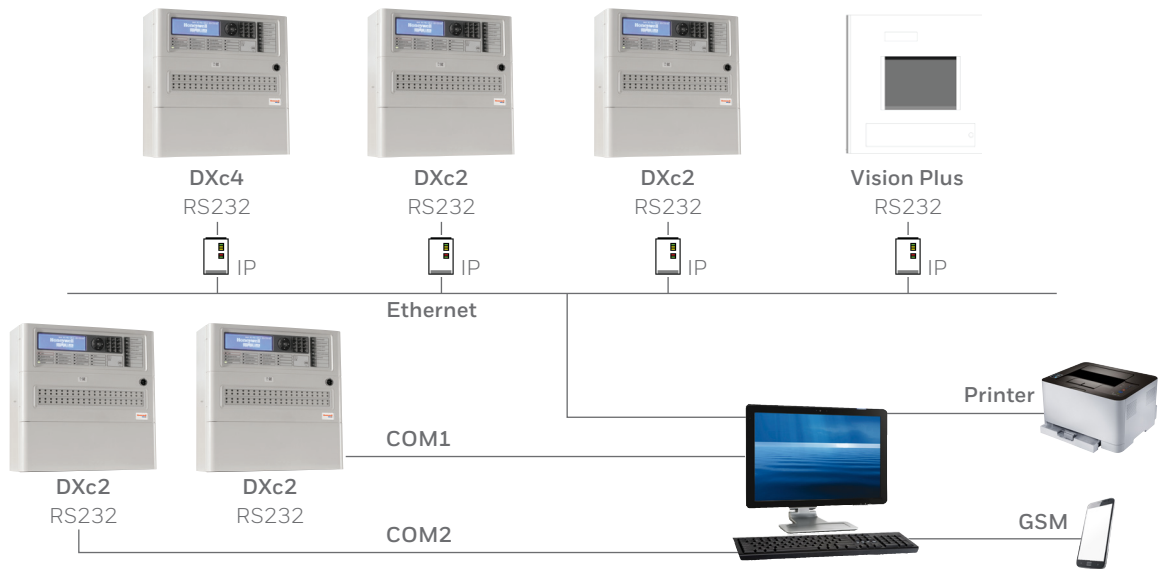


2. The connection of up to 10,000 systems via IP (TG V7), using the Morley-IAS RS232 to RJ45 (IP), reference TG-IP, for networks operating at 10/100 MHz. In this case, the computer will receive the relevant information through its network RJ45 card.

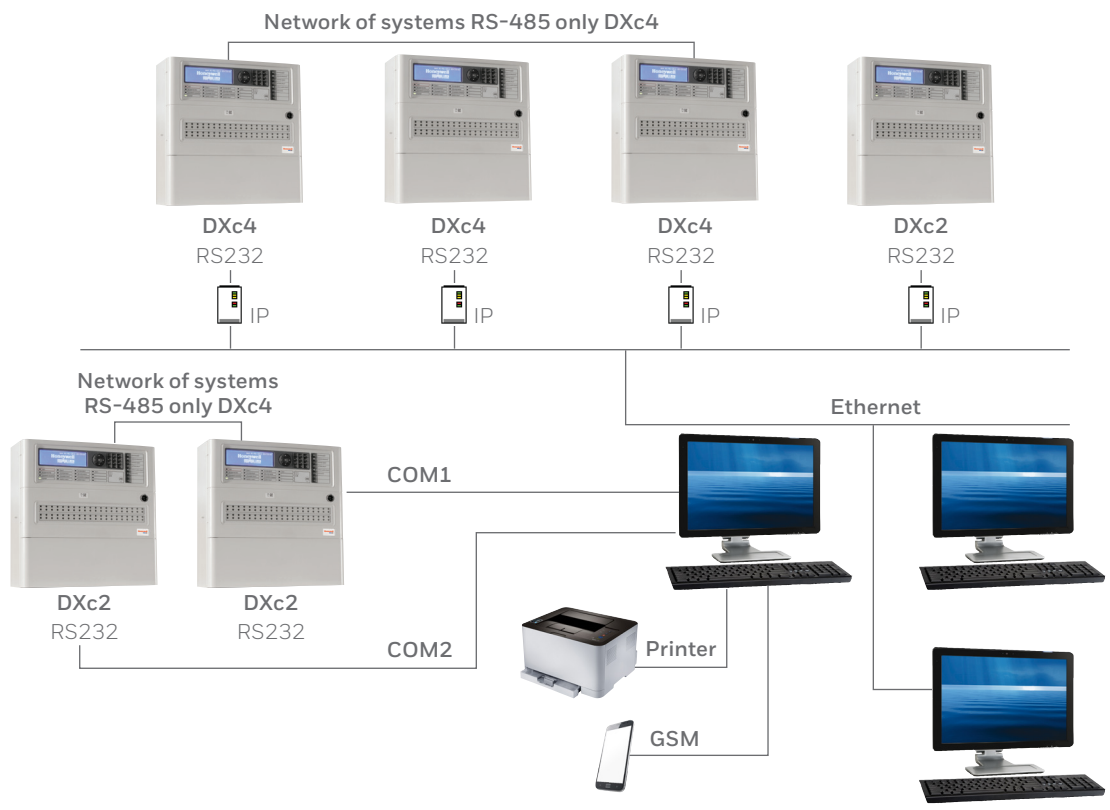


TG SOFTWARE SERIES GRAPHIC MANAGEMENT SOFTWARE

3. The connection of a number of systems directly to the serial port, with others via IP.



4. The connection of a number of systems directly to the serial port, with others via IP, the connection of network systems and the transmission of events to different computers within the same corporate network (Intranet). This topology contains a 'master' computer that receives information from all the systems and sends it to all computers within the same network. The same activities can be carried out by any computer as from the master, depending on the permit. The configuration and the planes of all equipment can be shared or there may be a separate configuration for each computer. The systems that are connected simultaneously to graphic software and to the network must be preferably DXc4 and the networks must not have more than 12 systems. If this is not the case, there will be no software control and management options and the individual management functions for each item of equipment will be reduced.



TG SOFTWARE SERIES GRAPHIC MANAGEMENT SOFTWARE



Multiples of secondary management computers can be connected to any point of the company's corporate network (Intranet)



Transmission of selected events from mobile telephone systems in the form of SMS message of up to 160 characters.

Each event can activate an audio message (Wav) or a previously stored video.

Video archives can be connected indicating the route to be followed up to the equipment or to the evacuation route.

For more information,

<https://honeywellbuildings.in>

Call: 1-800-103-0339

Email: HBT-Indiabuildings@honeywell.com

Honeywell HBT India Buildings

Unitech Trade Center, 5th Floor, Sector-43,
Block C, Sushant Lok Phase - I,
Gurgaon - 122 002

www.honeywell.com

© 2020 Honeywell International Inc.

**TG SOFTWARE SERIES GRAPHIC
MANAGEMENT SOFTWARE**

Honeywell